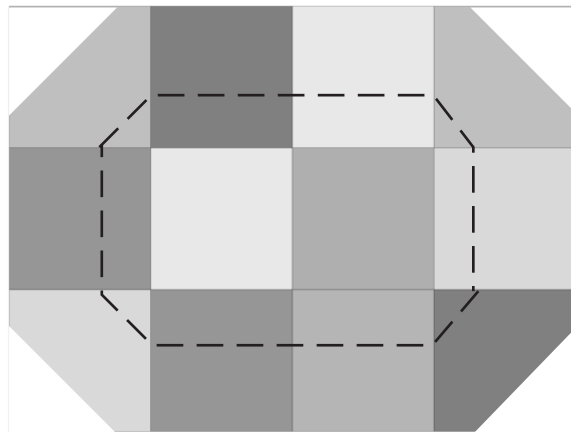


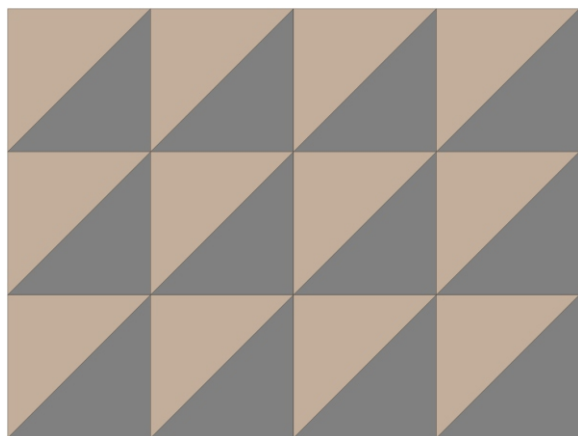
## Placemat Kit Contains:

- (12) 5" Squares and (1) 5" Strip
- You will not need all pieces for most patterns.
- Use 1/4" seams throughout unless otherwise directed.
- Press frequently and square up blocks.
- Spray starch helps with bias seams.
- Keep finished size to about 14" x 18".
- Placemats will be used daily and laundered frequently. Sewing needs to be functional and sturdy.
- Batting and backing will be needed to complete each placemat.

Here are some designs you can make with your kit.



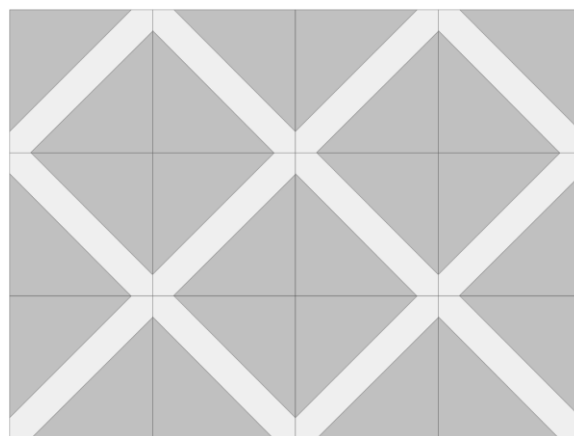
**Block Party**



**Half-Square Triangles**

Use (6) 5" Print Squares

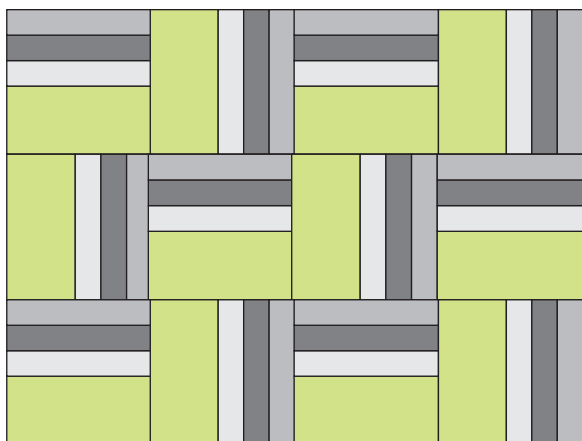
Cut (6) 5" Squares from Contrast



**Gridwork**

Use (12) 5" Print Squares

Cut (3) 1 1/2" strips from Contrast then cut into (12) 1 1/2" x 7 3/4" lengths

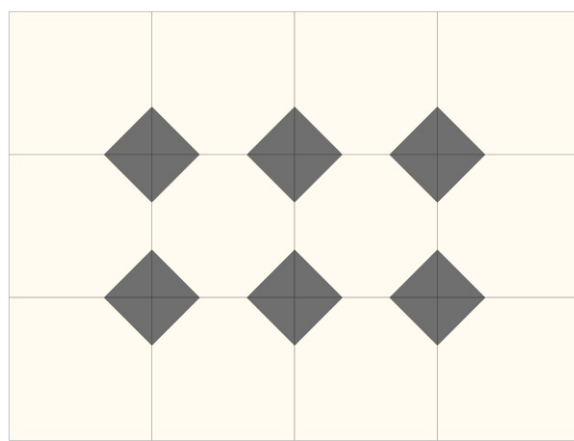


**Pathway**

Use (9) 5" Print Squares

Cut each square into (4) 1 1/4" x 5" strips

Cut (12) 2 1/2" x 5" strips from Contrast

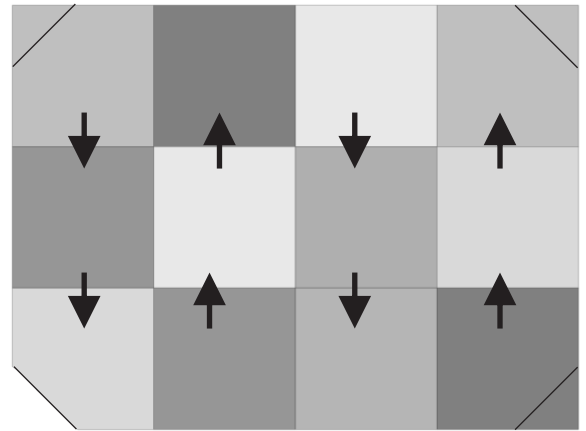


**Peepers**

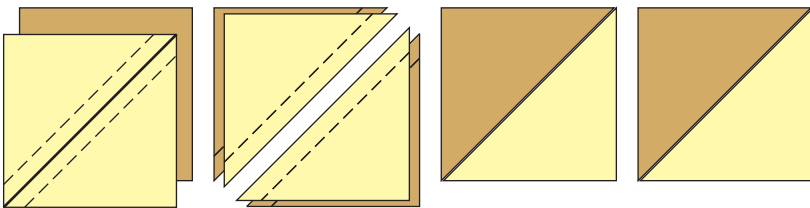
Use (12) 5" Print Squares

Cut (24) 2" Squares from Contrast

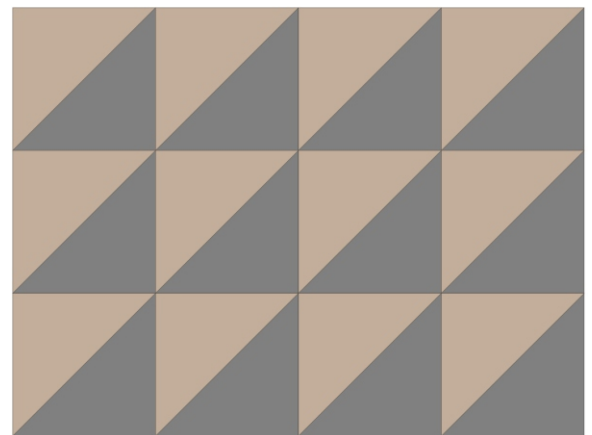
- Arrange squares in four rows of three.
- Sew together, pressing seams in opposite directions.
- Join rows, matching the seams. Press.
- On back of placemat, mark line 1 1/2" from each corner and cut on that line.
- Quilt 2 1/2" from outside edge.



**Block Party**



- Right sides together, place contrast square over print square.
- Draw a diagonal line from corner to corner.
- Sew 1/4" on either side of the drawn line.
- Cut on drawn line and press open.
- Trim all to same size 4 1/2" square.
- Assemble in rows.

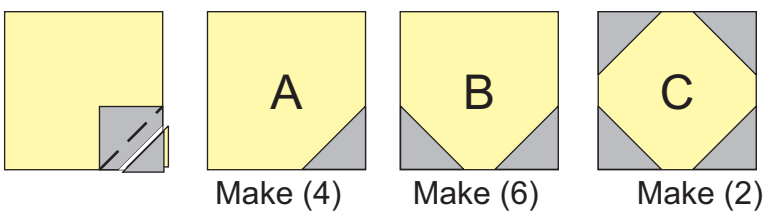


**Half-Square Triangles**

Use (6) 5" Squares

Cut (6) 5" Squares from Contrast Strip

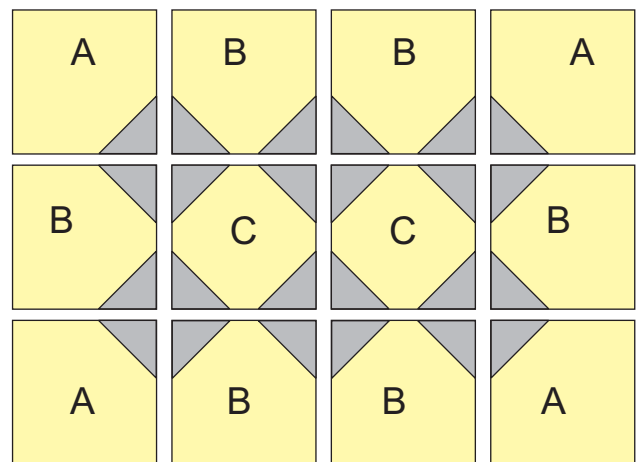
Place 2" squares on corner of print square and sew on diagonal from corner to corner. Trim off excess and press.



Make (4)

Make (6)

Make (2)

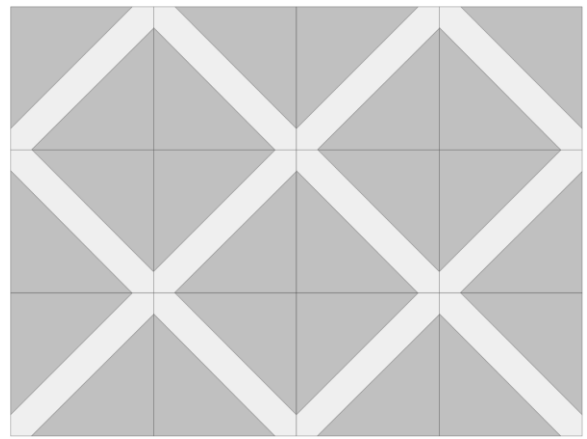
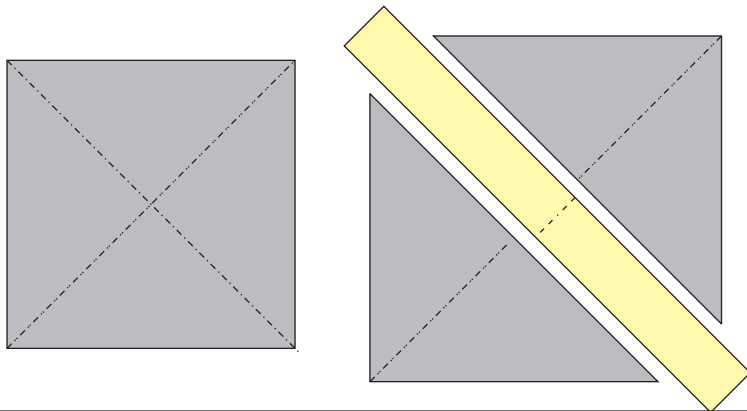


**Peepers**

Use (12) 5" Squares

Cut (24) 2" Squares from Contrast

- Fold (1) 5" square in half diagonally and crease with thumbnail.
- Open and refold it in the other direction. Cut on this fold.
- Now, you have two triangles with a crease marking the middle.
- Fold a 7 3/4" strip in half crosswise. Mark middle with a crease.
- Right sides together, line up the crease on one triangle with the crease on the 7 3/4" strip. Sew strip onto triangle and press.
- Line up crease on other triangle with other side of strip. Sew and press.
- Square up the block and trim the corners.



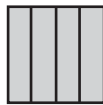
**Gridwork**

Use (12) 5" Squares

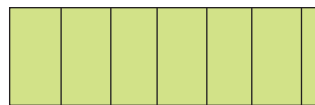
Cut (3) 1 1/2" strips from Contrast

Cut Contrast strips into  
(12) 1 1/2" x 7 3/4" lengths

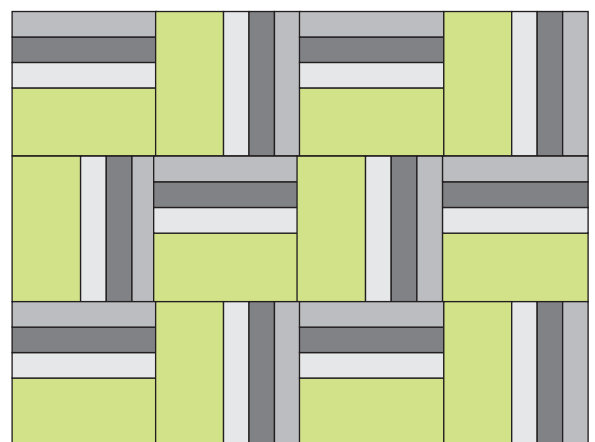
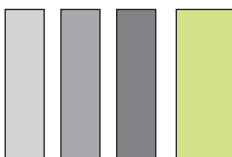
- Cut each 5" square in half and then in half again to make (36) 1 1/4" x 5" pieces.



- Cut (12) 2 1/2" x 5" pieces from contrasting fabric.



- Join (3) unmatching print strips together.
- To each unit, add one wider contrasting strip.
- Press and square up.
- When you lay out the blocks, be mindful of where you place the contrasting, wider strip.



**Pathway**

Use (9) 5" Squares

Cut each square into (4) 1 1/4" x 5" strips.

From Contrast strip  
Cut (12) 2 1/2" x 5" strips

## Finishing Your Placemats

Placemats can be finished in one of two ways. The envelope finish means you have to quilt it **after** the edges are finished. If you are using binding, you can quilt it either **before** or **after** it is bound.

### Envelope Style

Layers:

Batting - on the bottom  
Backing - right side up  
Pieced placemat top - right side down

- Sew around the outside, leaving a 3-4" opening where you will turn the sewn piece right side out.
- Trim out the corners, turn, press carefully, and top stitch the whole way around. This seam will also close the turning opening.
- Now quilt.

### Binding Style

Layers:

Backing - right side down  
Batting in the middle  
Pieced placemat top - right side up

Quilt and add binding.

Except for Block Party, it is up to you to choose which finish you prefer. Both work very well.